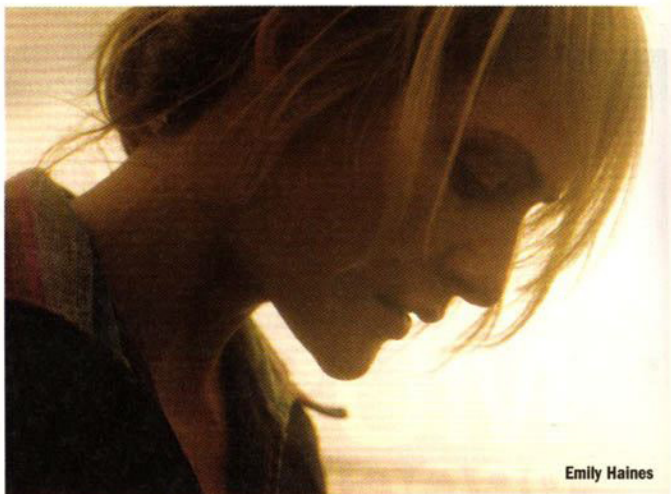


relix

THE MAGAZINE FOR MUSIC

SEPTEMBER/OCTOBER 2006



Emily Haines

**KNIVES
DON'T HAVE
YOUR BACK**

**EMILY HAINES
& THE SOFT SKELETON**

EMILY HAINES & THE SOFT SKELETON

Knives Don't Have Your Back ● Last Gang

Rather than battle her demons with synth beats and energized dance-rock, Metric frontwoman **Emily Haines** draws the listener into the shadows on her debut solo effort. Driven by melancholy piano lines reminiscent of early Tori Amos, as well as strings and horns, Haines sweetly croons and moans her laments. It's dark, sad and tinged with hope as Haines lets her guard down and encourages a situation of intimacy between the listener and the songs: You feel with her as Haines repeatedly whispers "I wake up lonely" on "Doctor Blind." For fans of Metric it's refreshing to see the group's frontwoman is not singularly talented; rather her range and skill overflow. Haines hasn't just created an album, she's created a mood. ★ *Emily Zemler*